

1ST CLASS

TO LET

Prime Retail, Leisure,
and Food & Beverage Units

Mailbox



Welcome to Mailbox

Birmingham's most iconic
city-centre destination, where
high-end retail, lifestyle, leisure,
and hospitality meet in one
dynamic, canalside location



Mailbox



Leisure



Work

One iconic building.
Endless experiences.



Retail



Stay



Dine

The perfect address

Mailbox is in the heart of Birmingham.
Just a three-minute walk from
New Street Station.

Leisure

- 1 Ultimate Fitness
- 2 O2 Academy
- 3 Puregym
- 4 The Craven Arms
- 5 The Botanist
- 6 Bullring
- 7 Bonehead
- 8 Brewdog
- 9 La Galleria
- 10 Anytime Fitness
- 11 Library of Birmingham
- 12 Dishoom
- 13 Birmingham Museum & Art Gallery
- 14 Rudy's Pizza
- 15 Flight Club
- 16 The Ivy
- 17 Bar & Block Steakhouse
- 18 Morridge
- 19 The Alchemist
- 20 Cosy Club

Hotel

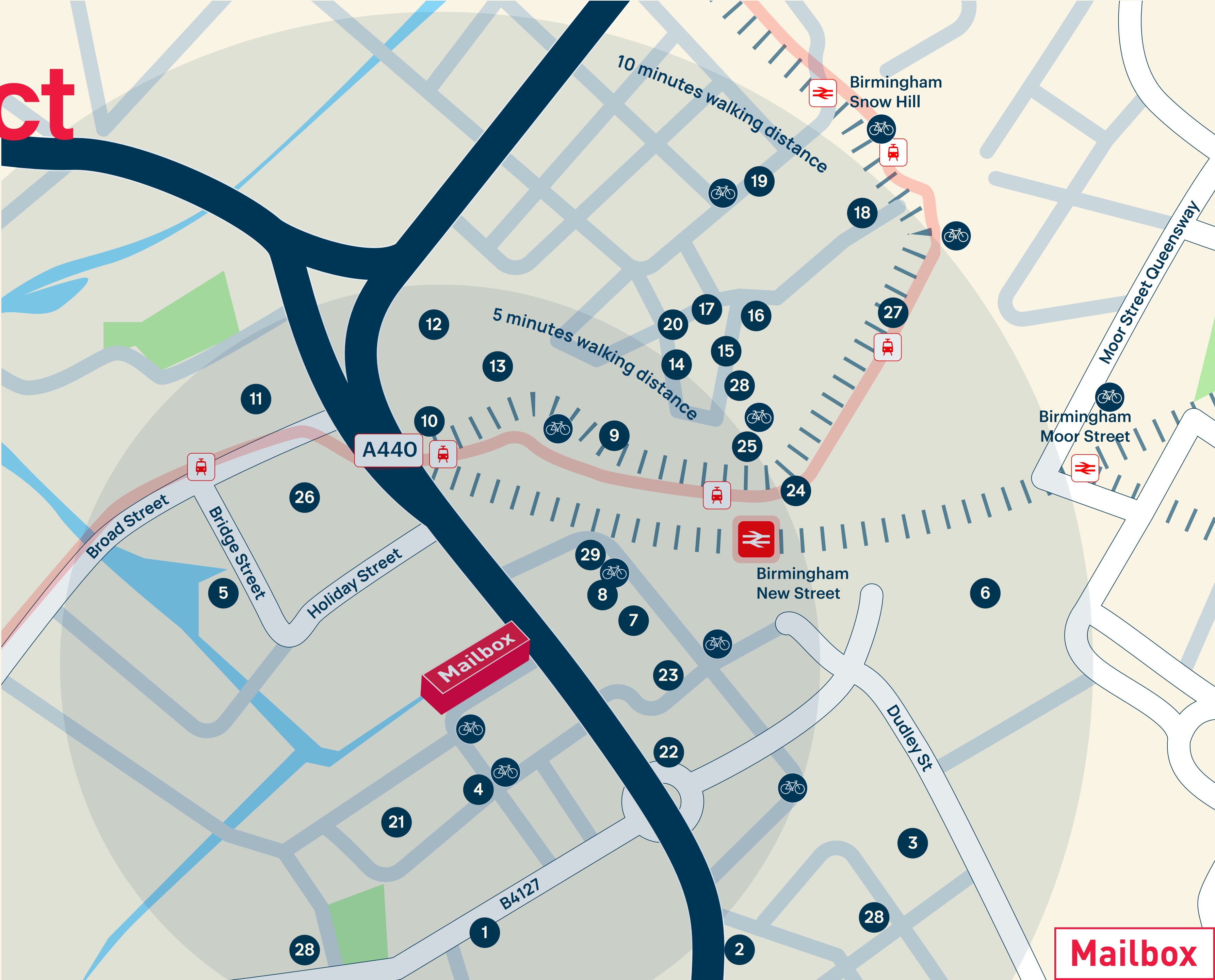
- 21 The Cube
- 22 Radisson Blue
- 23 easyHotel
- 24 Premier Inn
- 25 Macdonald Burlington Hotel
- 26 Crowne Plaza
- 27 Staybridge Suites

Convenience

- 28 Tesco
- 29 Sainsbury's

Transport

- Tram
- Cycle Docking Stations



Mailbox

Where luxury is delivered

1

High-spending, aligned audience

Over 50% of visitors align with premium consumer groups such as 'Commuter-Belt Wealth' and 'Settled Suburbia'. With a catchment of 4.06 million and leisure spend of over £589m, Mailbox is perfectly placed to connect your brand with people who spend.

2

Prime city. Strategic growth.

Birmingham is the UK's second-largest city and ranks 5th nationally for leisure spend. With 3,180 new homes completed in 2024 and 7,743 more under construction, Mailbox sits at the heart of a fast-growing, opportunity-rich environment.

3

Surrounded by prestige

Mailbox is anchored by a collection of leading retailers and lifestyle tenants, including Harvey Nichols, Malmaison, and Everyman Cinema. The destination offers an exceptional blend of luxury retail, wellness, and dining experiences.

Join Birmingham's first class line-up

HARVEY
NICHOLS

B B C

Malmaison

CASTLE
FINE ART

TESCO

SIXES
SOCIAL CRICKET



GIEVES & HAWKES
No.1 SAVILE ROW LONDON

EV
ERY
MAN



DERMOPERFECTION
Medical Skin & Cosmetic Clinic



SieMatic

MEDICINE



ASSOCIATED
ARCHITECTS



nickyclarke

oneAdvanced

wsp

THE MAYAN



Premium retail space available now

Ground floor, canalside and
upper-level units ranging from
829 to 49,518 sq ft

Flexible terms.
High footfall.
Surrounded by premium operators.

Ideal for:

- Flagship retail concepts
- Luxury fashion & accessories
- Wellness, spa & beauty
- Café-bar hybrids



Mailbox

Level

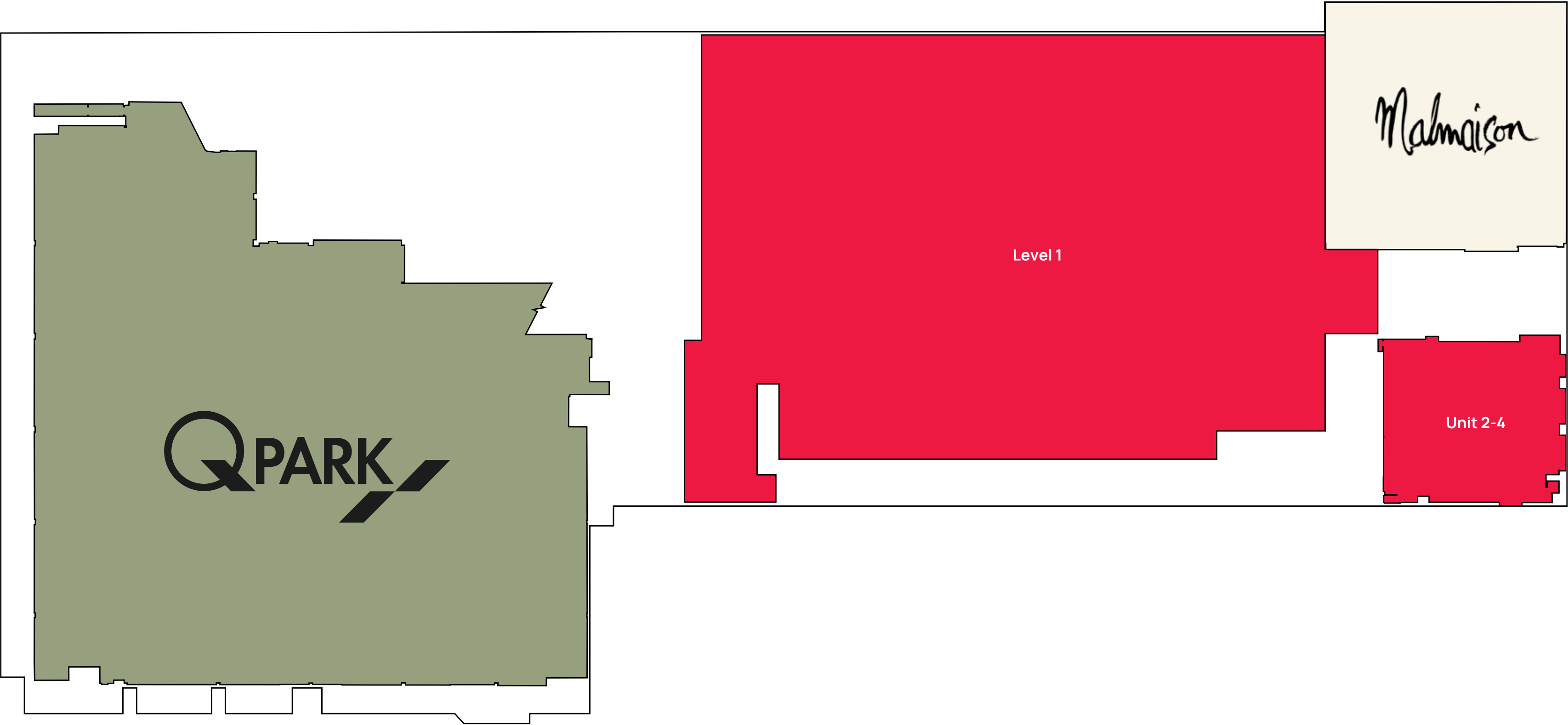
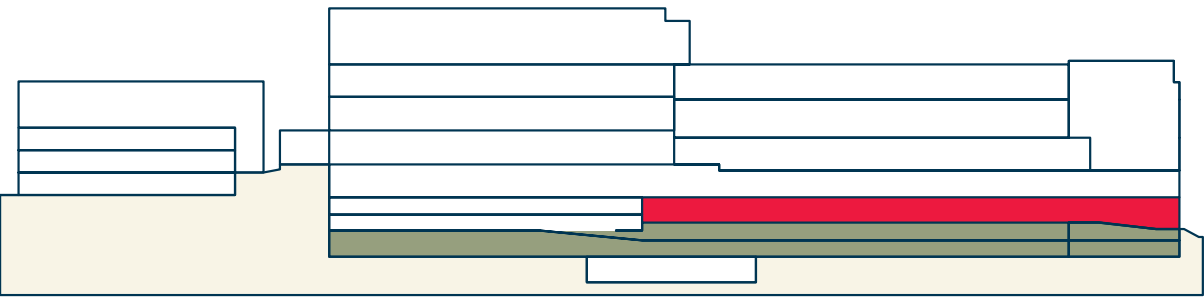
KEY

- Office
- Residential
- Available Units
- Car Park

Available Units

Size

2-4	5,330 sq ft
Level 1	49,518 sq ft



Level 2

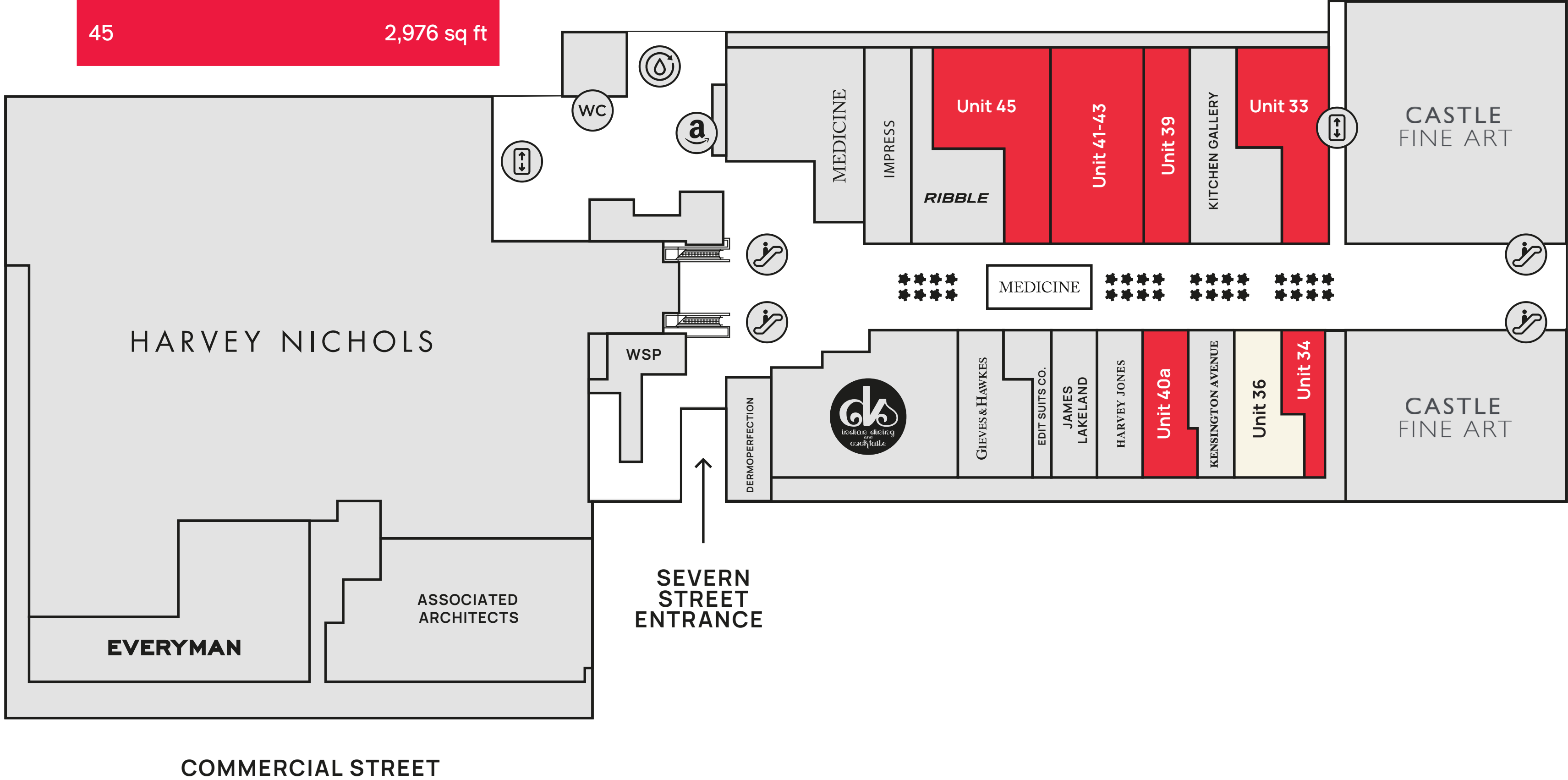
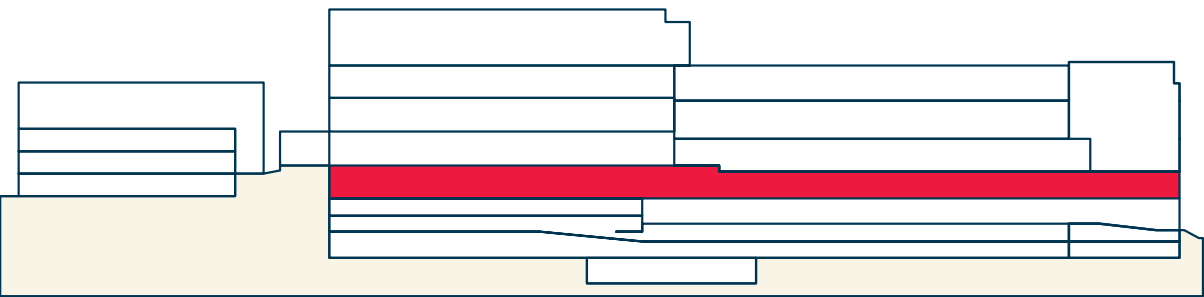
Available Units

Size

33	2,383 sq ft
34	829 sq ft
36 (Under offer)	1,229 sq ft
39	1,634 sq ft
40a	1,300 sq ft
41-43	3,331 sq ft
45	2,976 sq ft

KEY

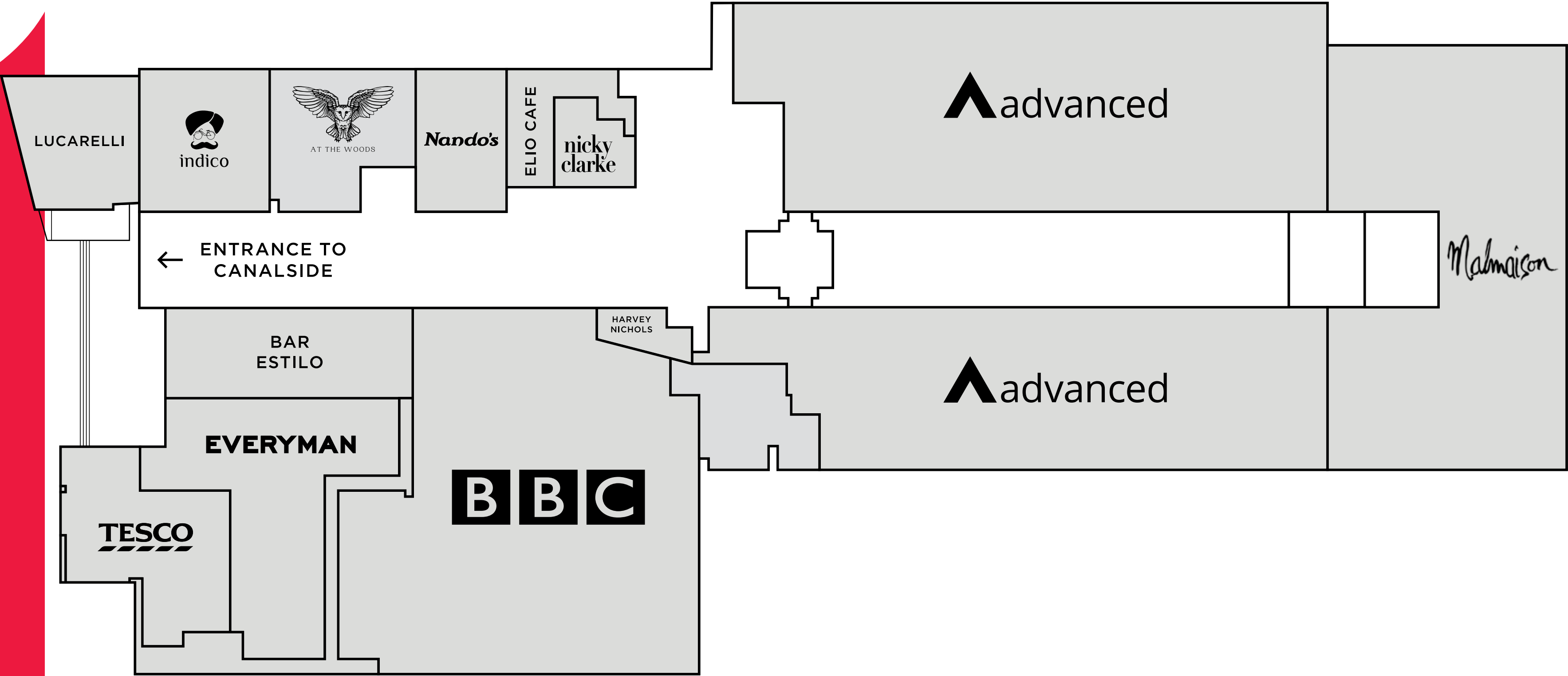
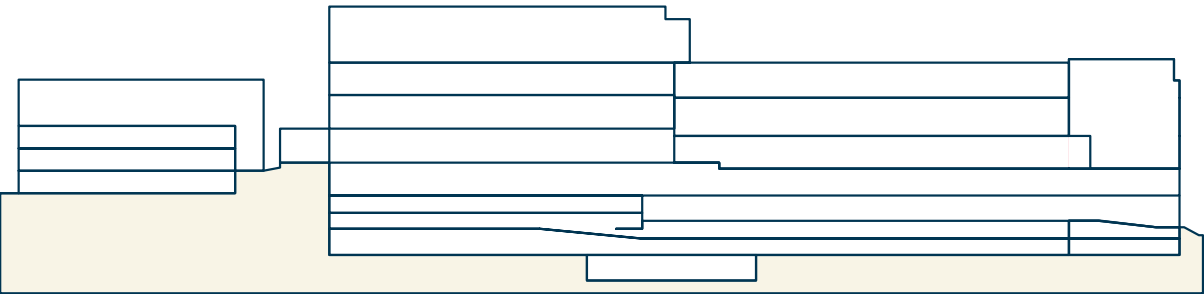
- Level 2
- Available Units
- Under Offer

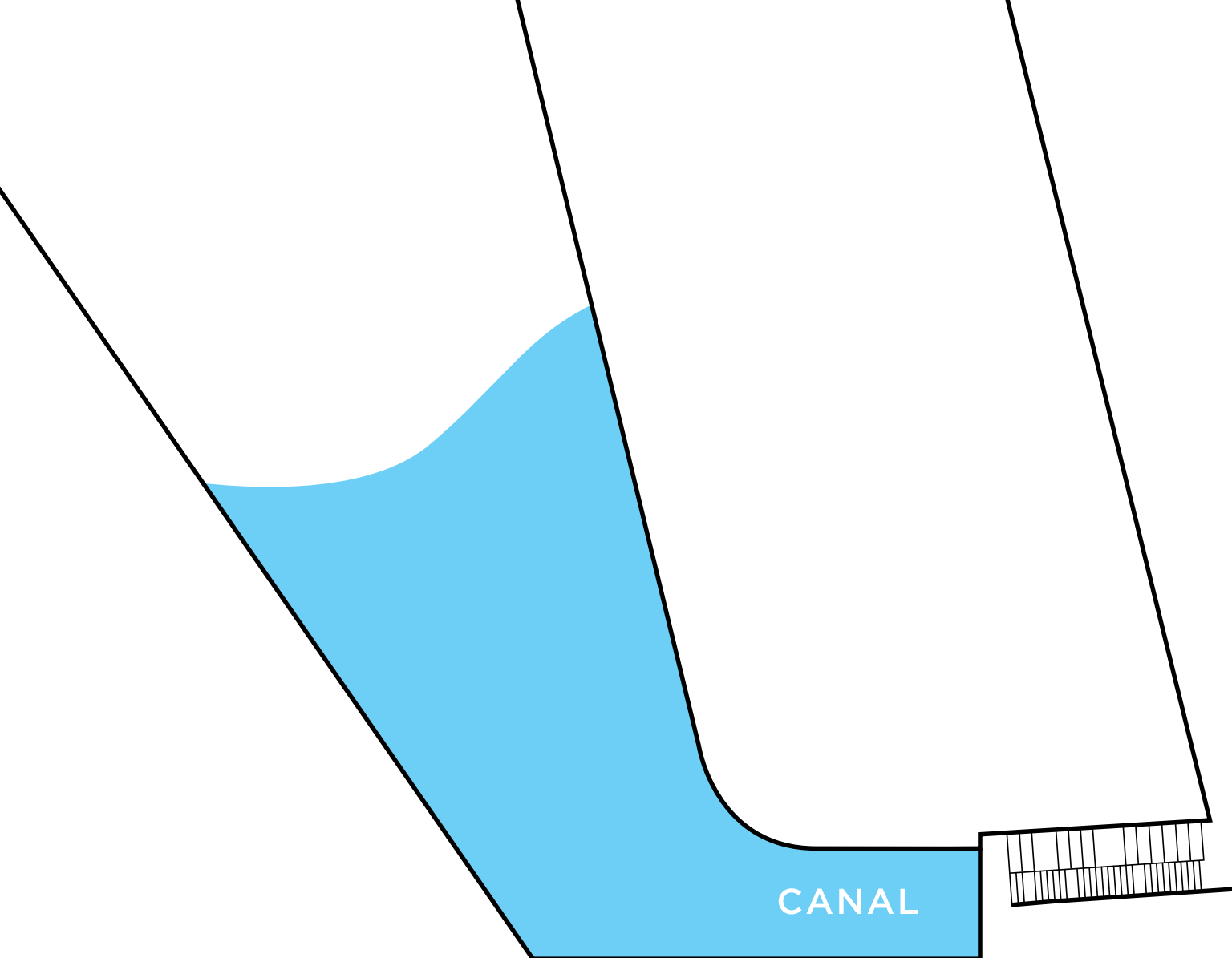




KEY

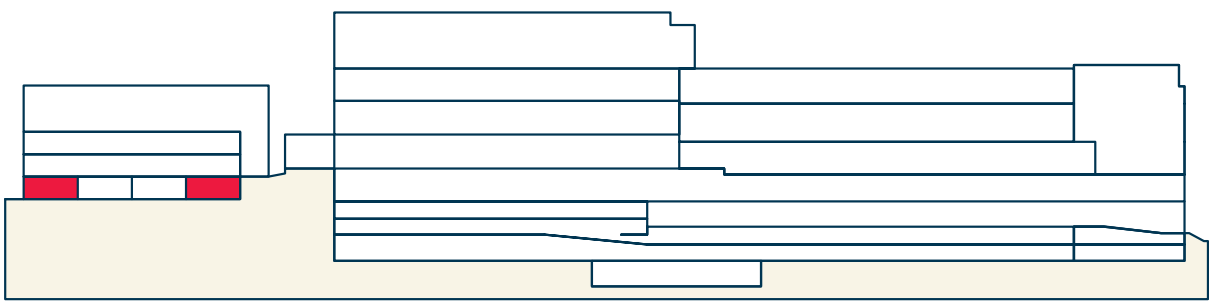
● Level 3





KEY

- Lower Canalside
- Mid Canalside
- Upper Canalside
- Available Units



Available Units	Location	Size
120-122	Lower Canalside	3,854 sq ft
132-134	Lower Canalside	5,164 sq ft



Canalside

Make your move to Mailbox

Let's talk

Mailbox

Ed Purcell

+44 (0)7793 808 974
ed@creative-retail.co.uk



Matt Pegg

+44 (0)7826 646 488
matt@creative-retail.co.uk

